

SVM-21 SMART VALVE

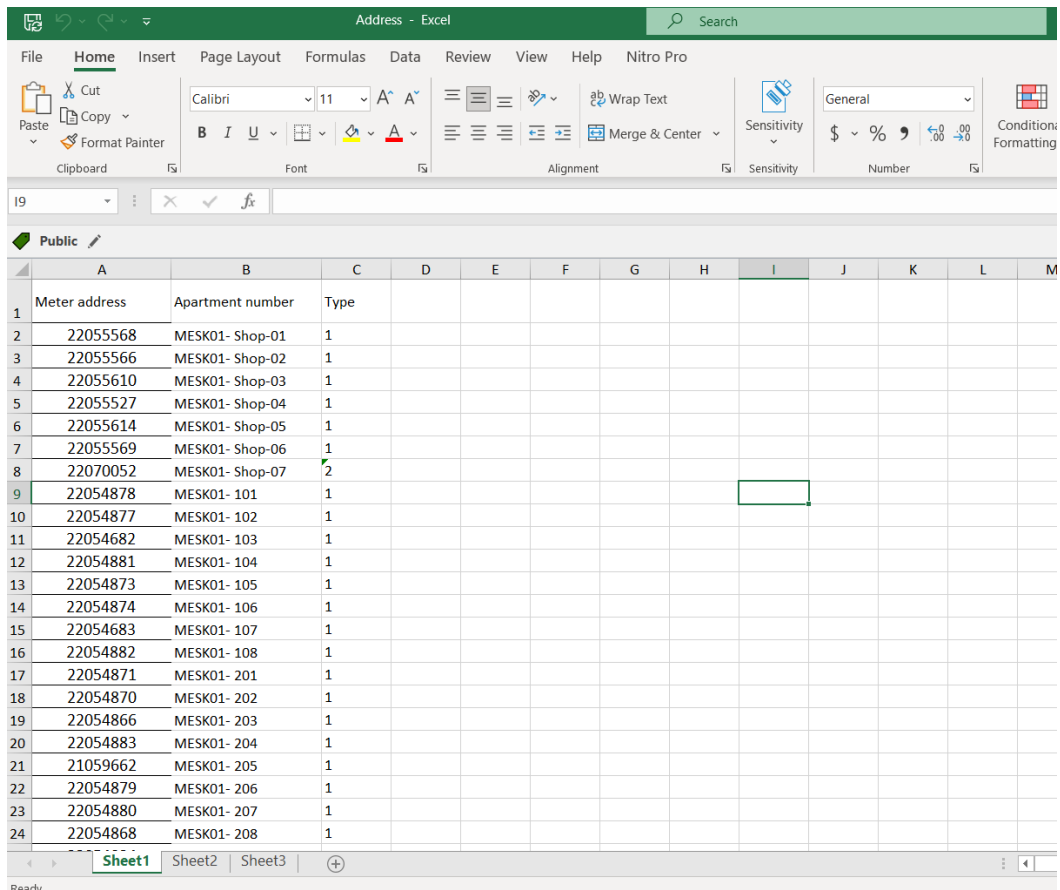
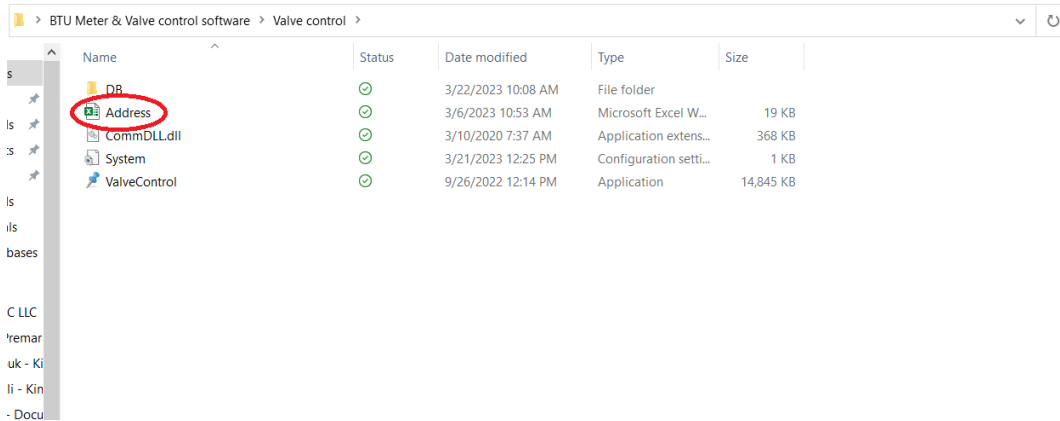
SMART M-BUS ISOLATION VALVE



User Manual

1. Database

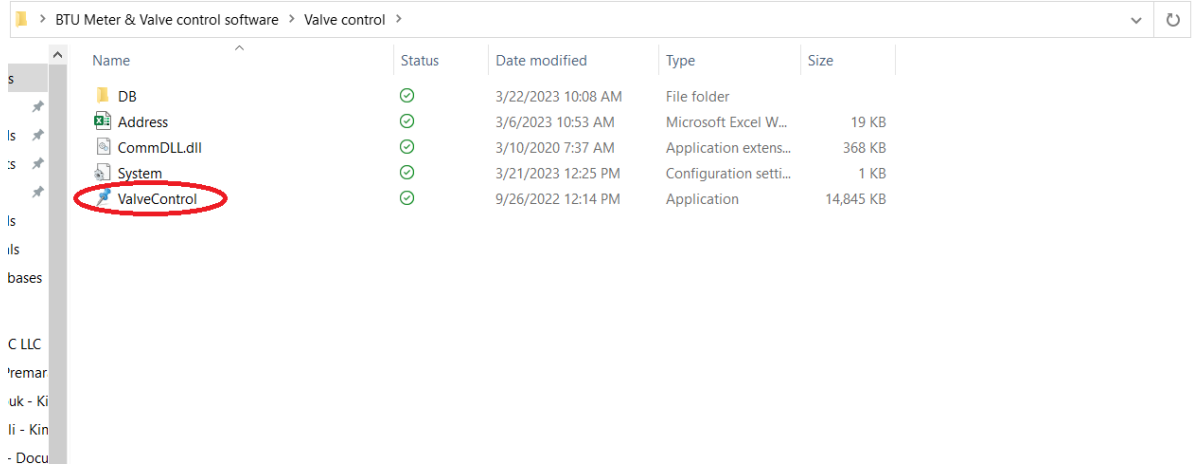
a. Database is linked through software with excel file as below



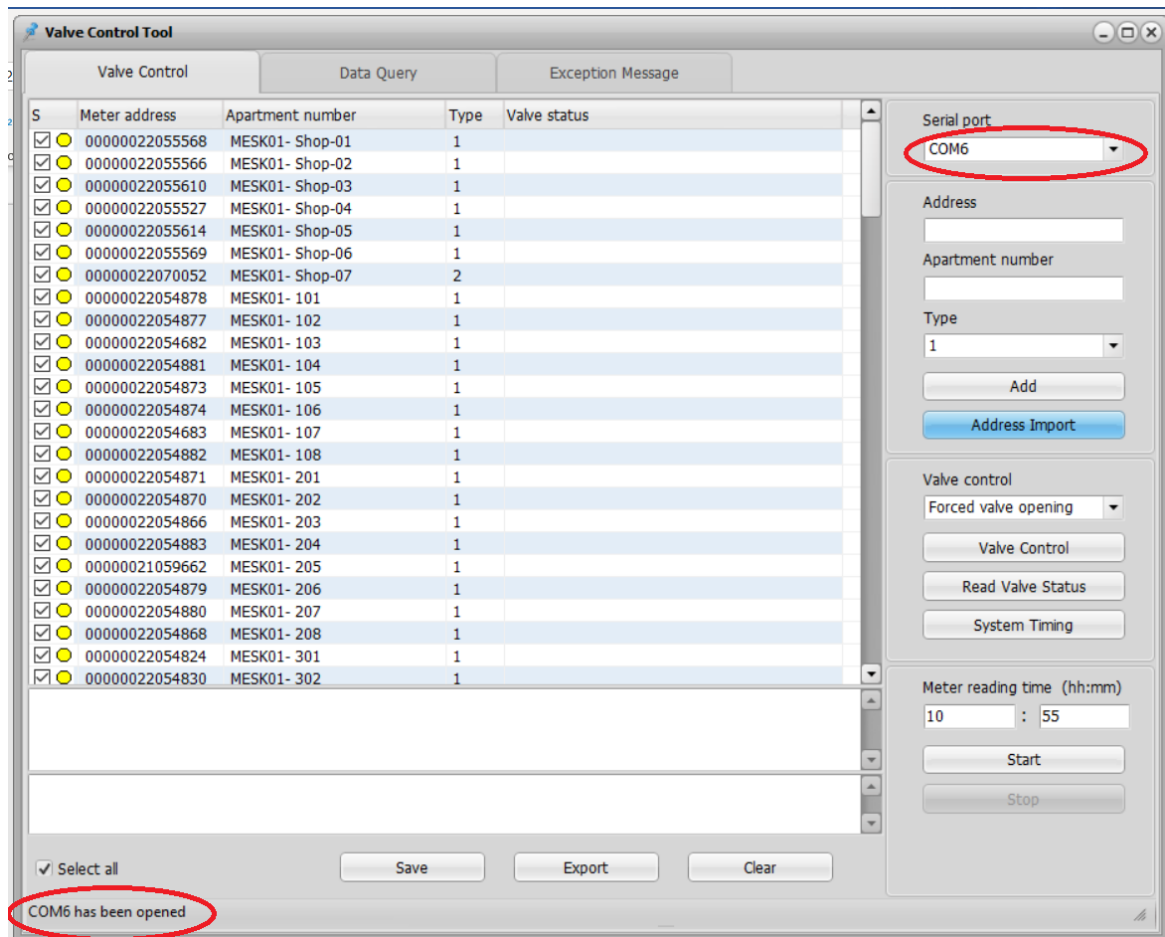
- To change any valve address change in this excel file and save
- Threaded valves are type 1
- Flanged valves are type 2

2. Open Valve Control Software

Once excel file is closed open valve control software

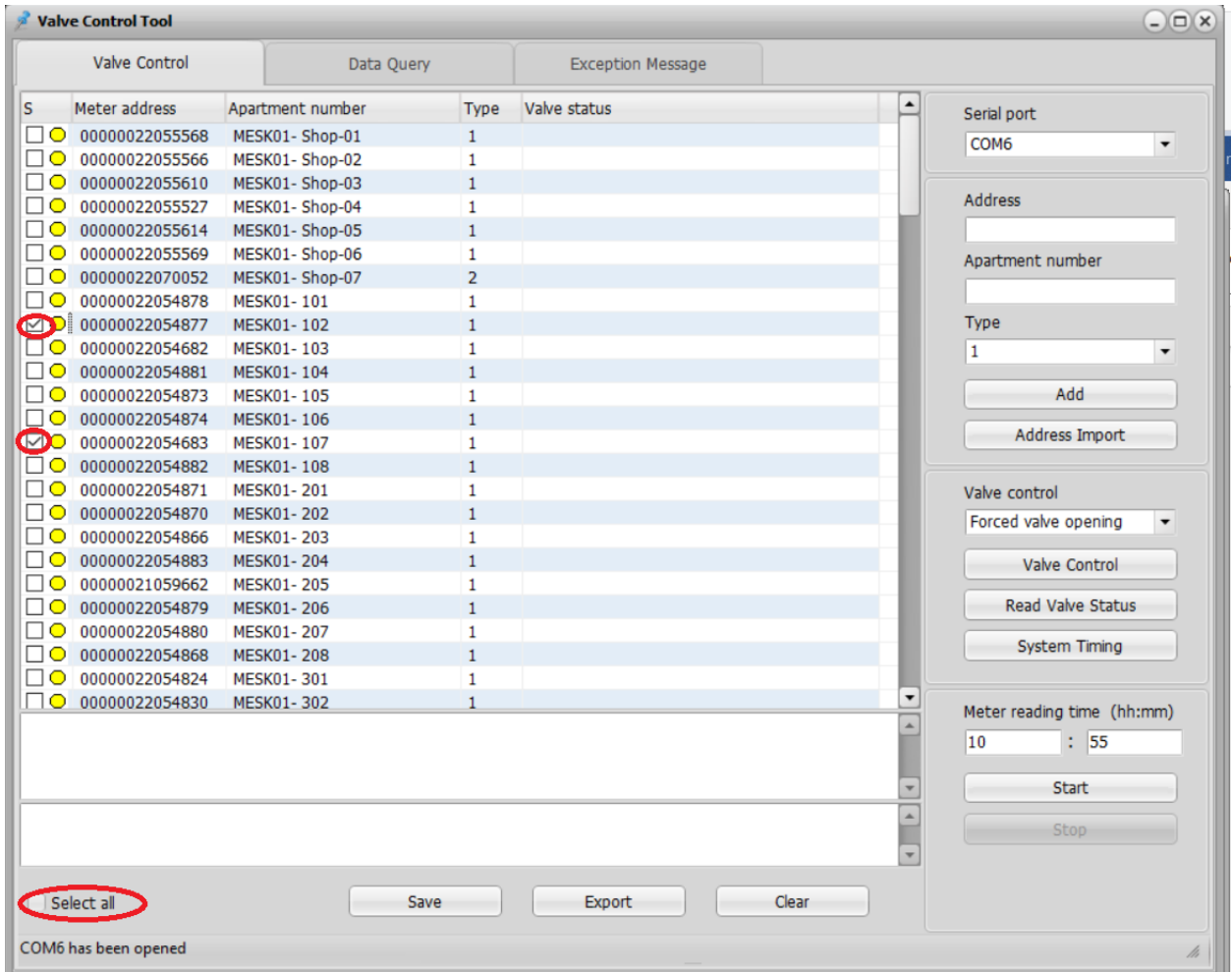


Select right com port and port should show open

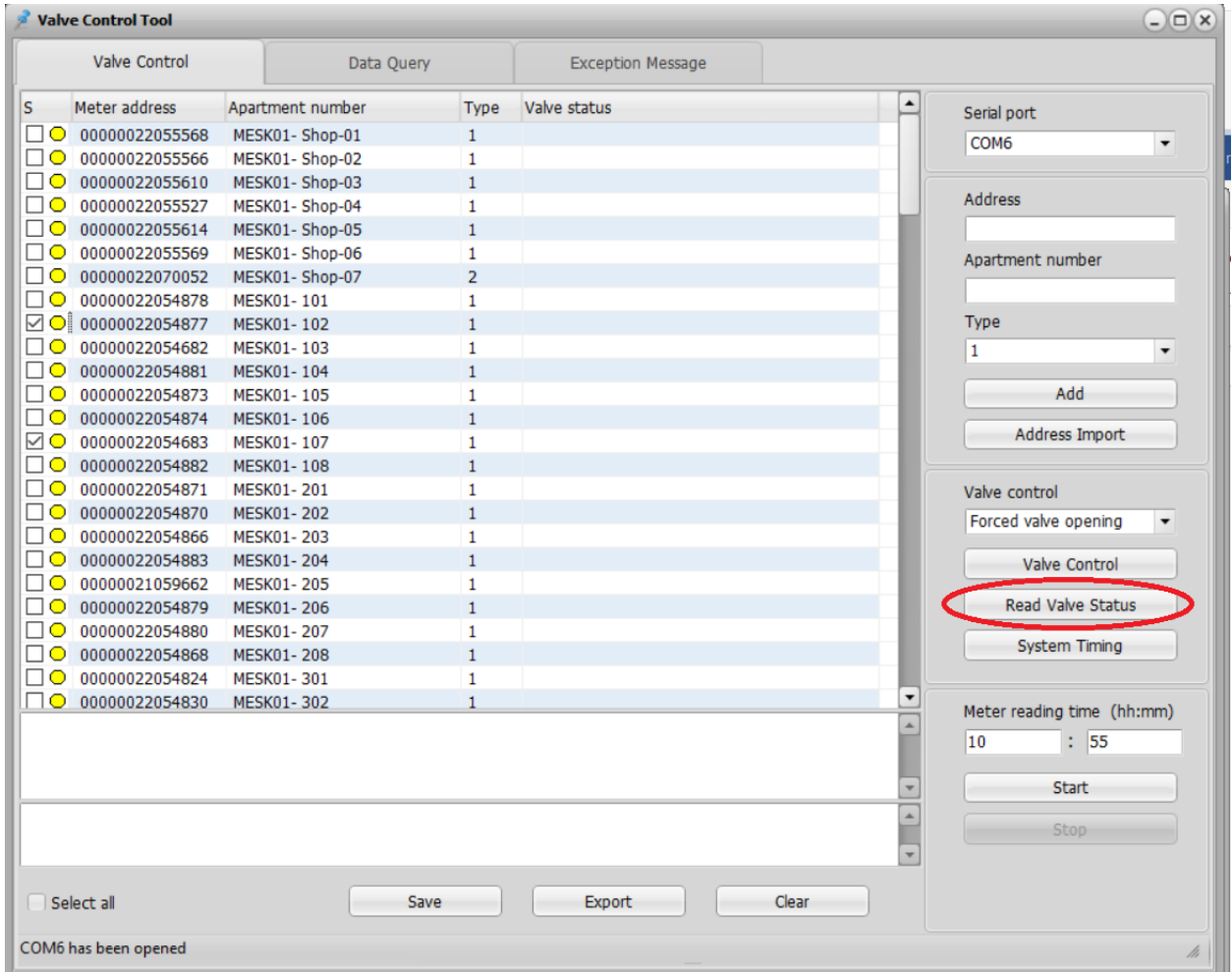


3. Reading valves

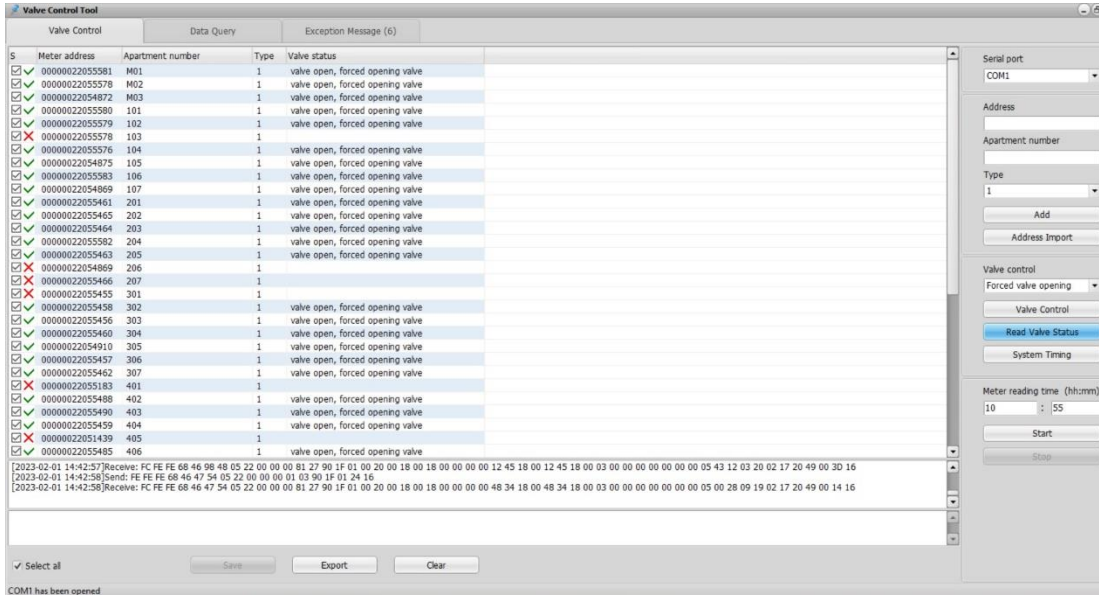
Once COM port is opened, select valve you want to read or control, by default all valves are selected you can un select all and select which are required



After selecting required valves you can read valves from below mentioned button



After Reading Status software will show status of each valve



If red cross appears means that valve is not communicating

1. Controlling valves

Valves can be controlled using below mentioned command, first select command and then press Valve control

