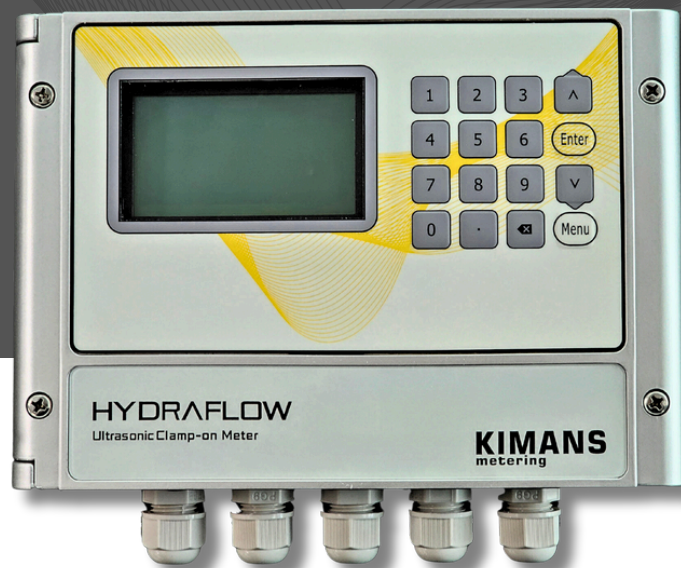


HYDRAFLOW

Ultrasonic Clamp-on Flow/BTU meter

Revolutionizing Flow



HYDRAFLOW ultrasonic clamp-on flow and BTU meter is the perfect solution for measuring fluid flow in a wide range of industrial applications. Our ultrasonic flow meter features state-of-the-art technology and is designed to provide highly precise and reliable flow measurements, even in challenging environments.

DATA LOGGING



ENERGY VERSION
OPTION



IP68 PROTECTION



HIGH ACCURACY



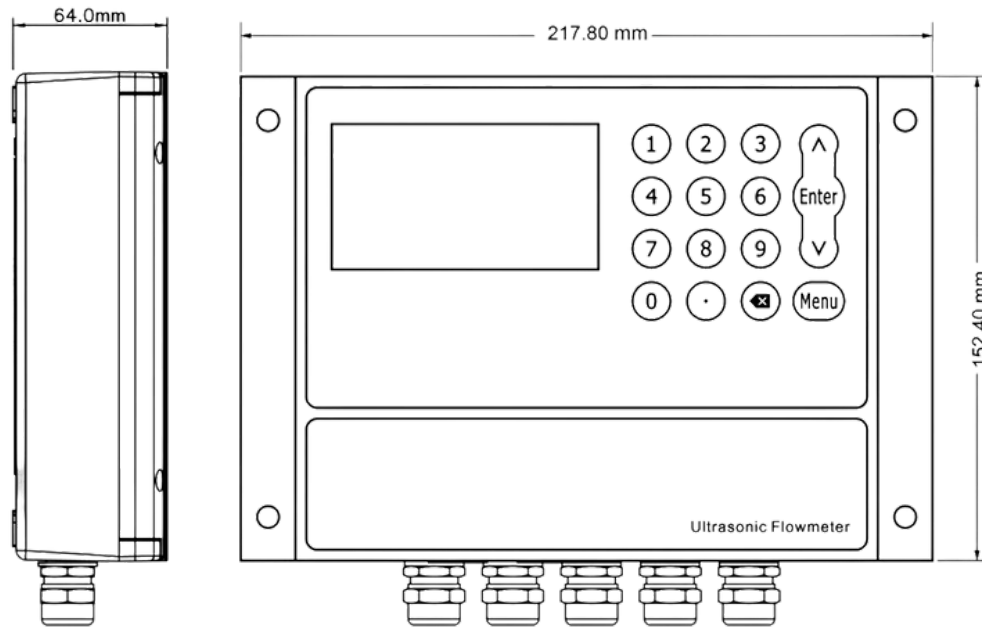
FEATURES

TECHNICAL DATA

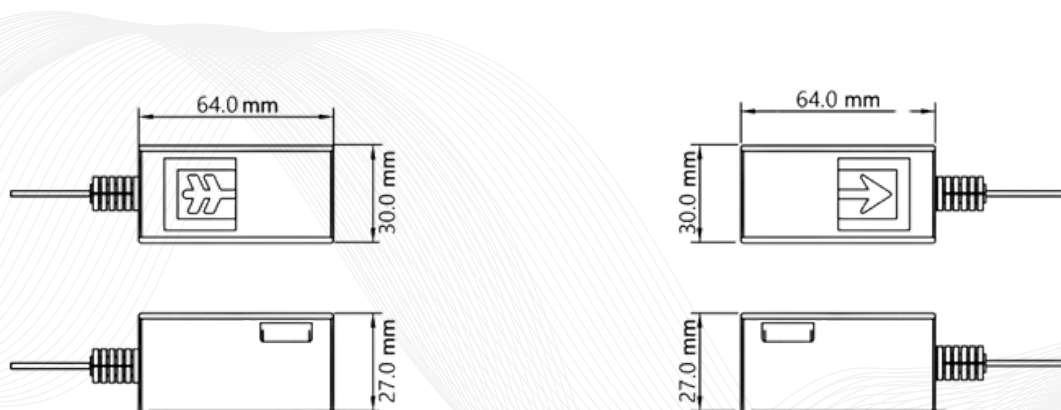
Pipe Size	mm	DN25 to DN1200
Flow range	m/s	± 0.09 ft/s to ±40 ft/s (±0.03m/s to ±12m/s)
Accuracy	%	±1 of reading (optional: 0.5%)
Repeatability	%	0.2 of reading
Inputs	%	2 x Temp. PT1000 RTD (energy version only)
Transmitter	-	PC/ABS, IP65
Transducer	-	ABS, IP68 encapsulated design double shielded transducer cable
Cable length	m	upto 274
Power supply	-	10 to 36 VDC/1A or 90 to 245 VAC
Temperature	°C	Transmitter: -20 to 60 Transducer: -20 to 80 (standard), -40 to 130 (high temp. version)
Outputs	-	Analog output: 4 to 20mA, max load 750Ω Pulse output: 0 to 10KHz
Communication	-	RS232 / RS485 Modbus, HART(optional)
Display	-	240*128 back lit LCD
Humidity	-	Upto 99% RH, non-condensing

DIMENSIONS

TRANSMITTER



TRANSDUCERS



ORDERING CODE

HYDRAFLOW	/	UCM	/	XXXX	/	X	/	X	/	X	/	X	X	X
TRANSMITTER														
UCM														
Ultrasonic flowmeter Wall mount														
Flow range: ±0.09 ft/s to ±40 ft/s (±0.03m/s to ±12m/s)														
Display: 240*128 back lit LCD														
Power supply: 10-36VDC@1A max Transmitter enclosure: IP65, ABS (Temperature: -20 to 60 °C)														
OUTPUTS/INPUTS (up to 4 can be selected)														
Pulse output 0 to 10KHz														
RTD input (Energy) *must select Code PT1000 or provide external temperature sensors														
1 x Relay														
RS485														
4-20mA														
M-Bus														
TYPE OF TRANSDUCER														
Clamp-on, IP68. Operating temperature: -40°F to +176°F (-40°C to +80°C)														
Clamp-on, IP68. Operating temperature: -40°F to +176°F (-40°C to +80°C) high performance (HP)														
Clamp-on, IP68. 2MHz Pipe size DN15 to DN25 only , operating temperature: 32°F to 140°F (0°C to +60°C)														
Clamp-on, IP68. Operating temperature: -40°F to +266°F (-40°C to +130°C)														
Insertion, IP68. Operating temperature: -40°F to +266°F (-40°C to +130°C)														
TRANSDUCER CABLE LENGTH														
Standard length 30ft (9m), C2 transducer standard length 15ft (5m)														
Max length to 900ft (274m)														
TEMPERATURE SENSOR														
PT1000 temperature sensor *must select code RT for RTD input														
OPTIONS														
AC power, 90 to 245 VAC														
SD card														
HART														

HYDRAFLOW is a registered trademark of Kimans Metering. Due to continuous R&D, product improvements and enhancements, Kimans Metering reserves the right to change product or system specifications without notice, except to the extent an outstanding contractual obligation exists. © 2024 Kimans Metering. All rights reserved.